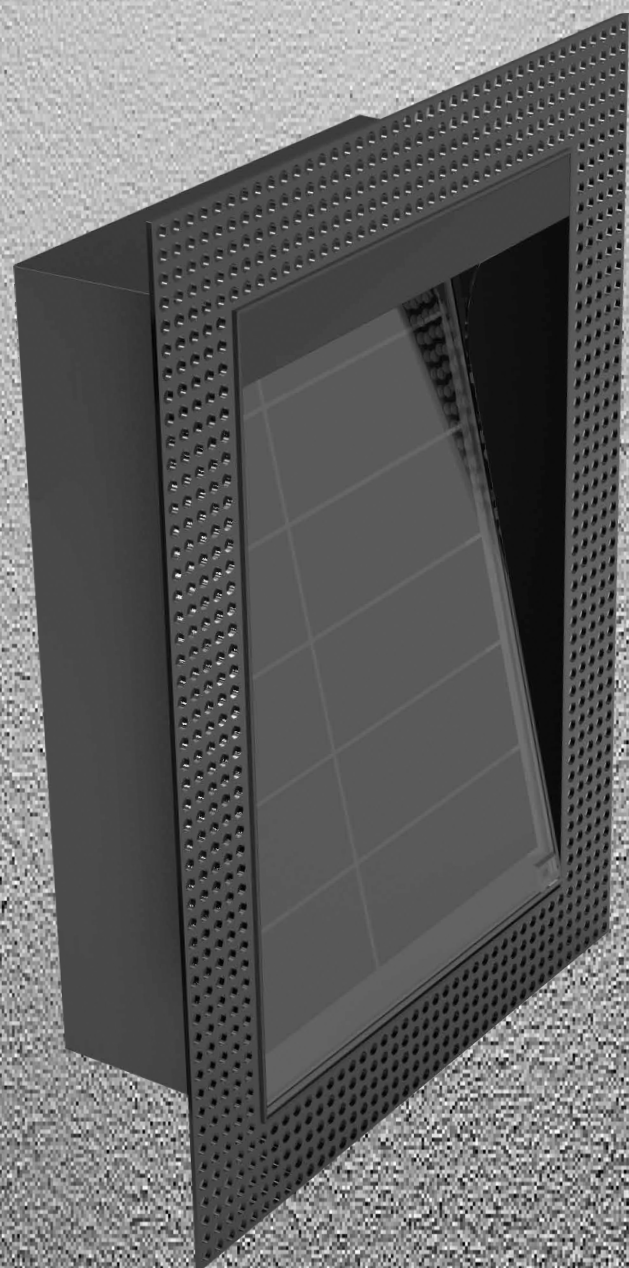


# LED Solar Recessed wall wash light

-Illuminating Paths with Sustainable Elegance



shineto<sup>®</sup>



shineto<sup>®</sup>

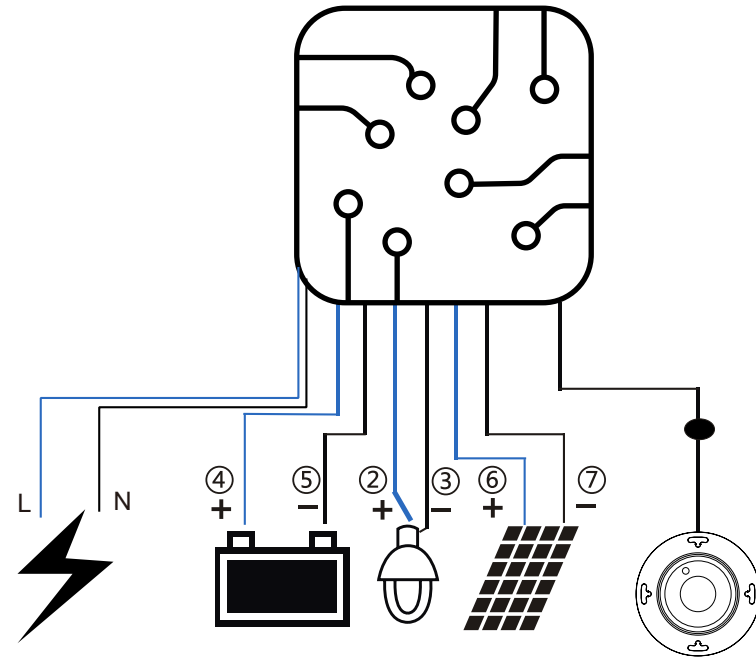
Jiaxing Shinetoo Lighting Co., Ltd

Add: No. 258, Xingchang Road, Xincheng Town, Xiuzhou District,  
Jiaxing, Zhejiang, China 314015

Tel: +86-573-8350-0001 Fax: +86-573-8350-0005  
Mobile: +86-138-1878-3129

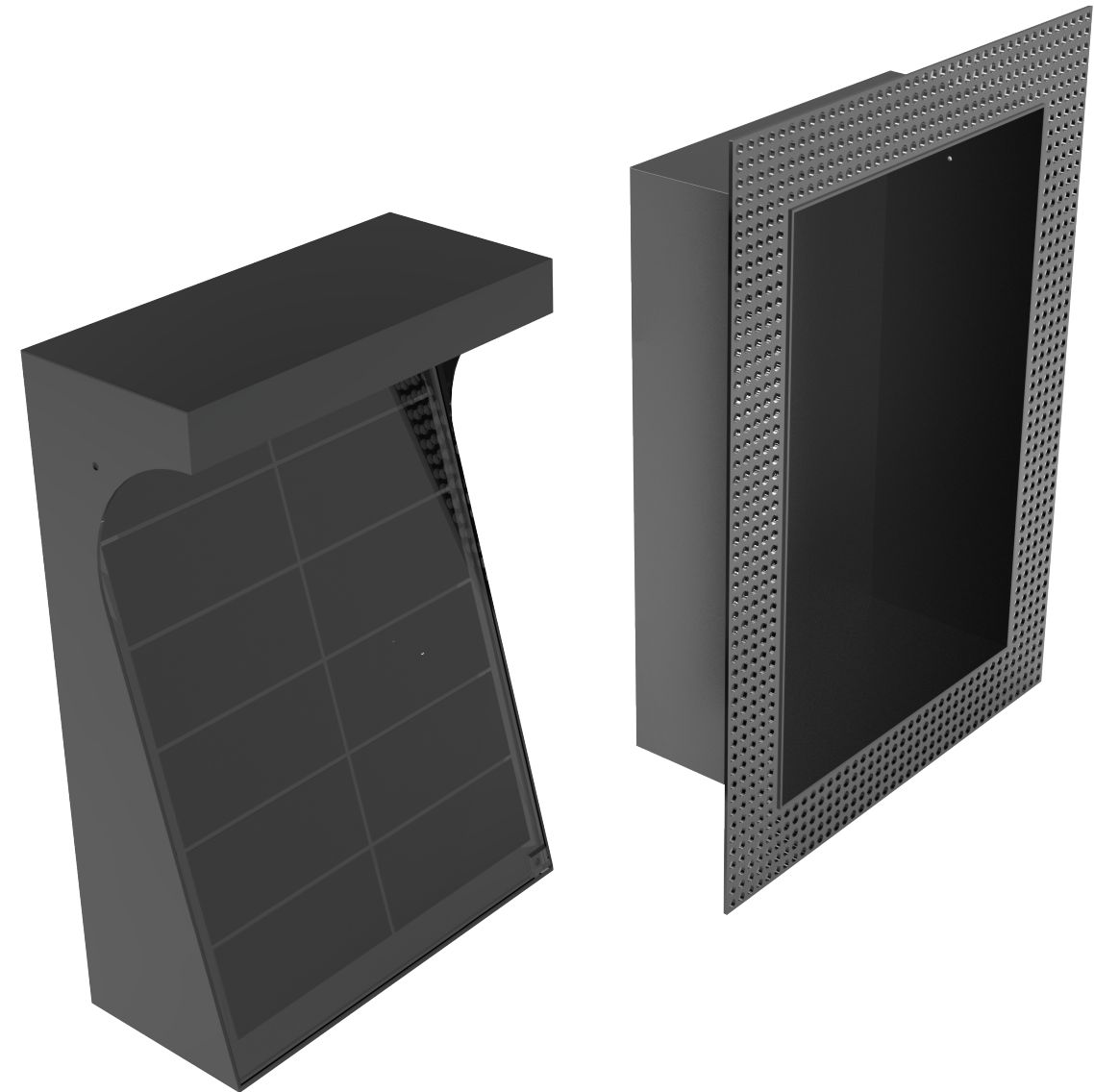
Email: sales@stledlights.com  
www.stledlights.com

# Solar Charge Controller



# SHINETOO

LED Solar Recessed wall wash light



Innovative max power point tracking (MPPT) technology, tracking efficiency >99%



Motion detection for adapting dimming levels based on pedestrian needs



Full digital technology, high charge & discharge conversion efficiency up to 96%



**IP69K** IP69K, Strong and durable aluminum case



Precision constant current control supports from 50mA up to 3000mA



Full automatic electronic protection



5 Step dimming can be programmed from 0% to 100% levels



Low voltage disconnect (LVD) and reconnect (LVR) settings in order to keep battery life healthy



Remote control operation

## Finish Color Codes

- 01	- 02	- 03	- 05	- 06
Black	Dark Grey	White	Matt Silver	Bronze
RAL 9011	RAL 7043	RAL 9003	RAL 9006	RAL 6014

## SPECIFICATIONS

	Model Number	ST-Orion-S
	LED	MAX > 300lm
	Battery Capacity	10AH 3.7V
	Solar Panel Power	Pmax 4W
	Working Mode	STD-4 Step dimming
	Rainy Day	4-10 days
	Photometric Options	Asymmetric / Symmetric
	Color Temperature	2500-6500k / CCT
	IP&IK Protection	IP65 & IK10
	Housing Material	Aluminum 6063+Carbon steel+PC+Glass
	Housing Color	Black
Dimensions	L: 264mm×W: 198mm×H: 93mm	

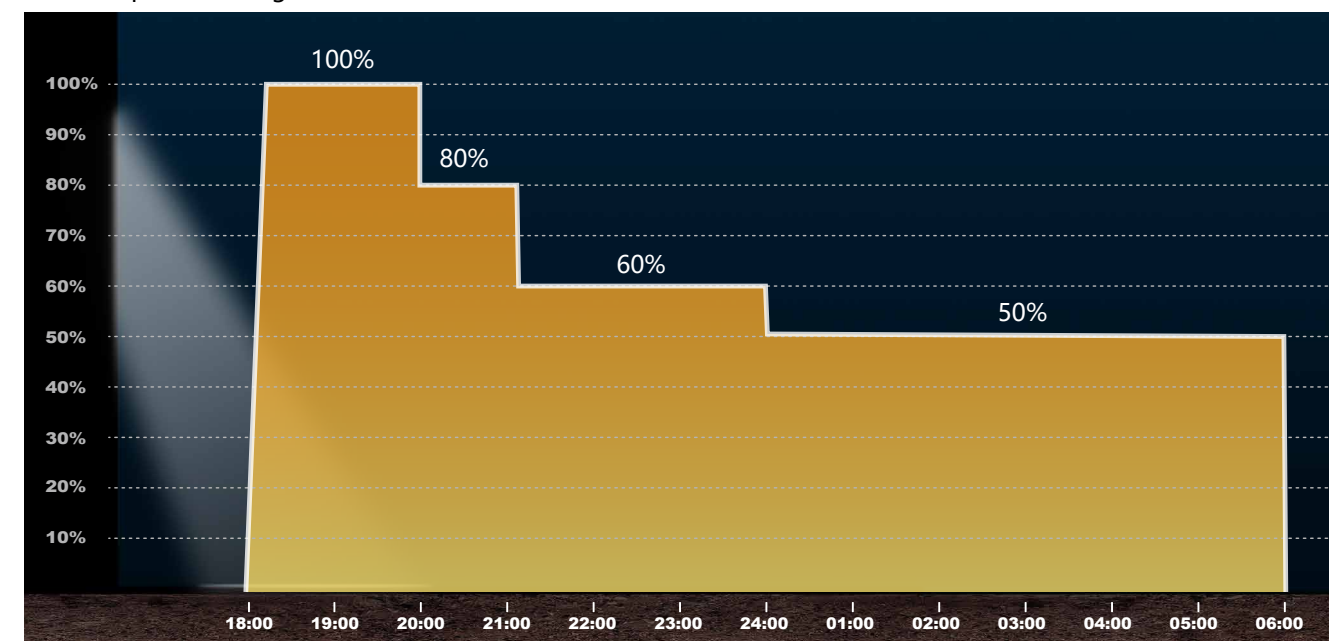
	Model Number	ST-Orion-M
	LED	MAX > 550lm
	Battery Capacity	15AH 3.7V
	Solar Panel Power	Pmax 10W
	Working Mode	STD-4 Step dimming
	Rainy Day	4-10 days
	Photometric Options	Asymmetric / Symmetric
	Color Temperature	2500-6500k / CCT
	IP&IK Protection	IP65 & IK10
	Housing Material	Aluminum 6063+Carbon steel+PC+Glass
	Housing Color	Black
Dimensions	L: 385mm×W: 283mm×H: 93mm	

	Model Number	ST-Orion-L
	LED	MAX > 1500lm
	Battery Capacity	30AH 3.7V
	Solar Panel Power	Pmax 30W
	Working Mode	STD-4 Step dimming
	Rainy Day	4-10 days
	Photometric Options	Asymmetric / Symmetric
	Color Temperature	2500-6500k / CCT
	IP&IK Protection	IP65 & IK10
	Housing Material	Aluminum 6063+Carbon steel+PC+Glass
	Housing Color	Black
Dimensions	L: 600mm×W: 365mm×H: 93mm	

## Control scheme

### Intelligent module optical control scheme

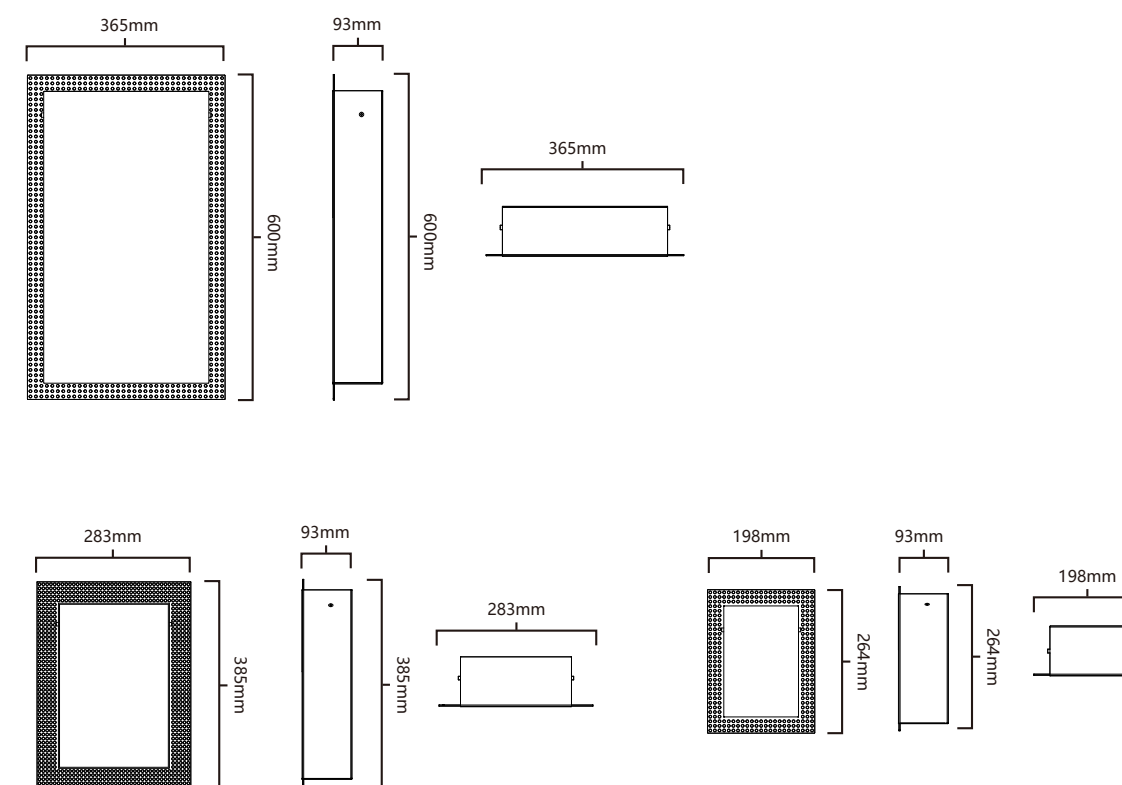
The power can be controlled remotely or manually  
Intelligent power reduction is a fixed parameter and cannot be adjusted  
For example, the sun goes down at 18:00



### MPPT Optical control scheme

Intelligent power down adjustable.

## DIMENSIONS





shinetoo®

Jiaying Shinetoo Lighting Co.,Ltd(China Factory)

Add:No.258, Xingchang Road, Xincheng Town, Xiuzhou District,  
Jiaying, Zhejiang, China 314015  
Tel : +86-573-8350-0001 Fax : +86-573-8350-0005  
Mobile : +86-138-1878-3129  
Email:Sales@stledlights.com